



Cross-Flow Fans TF/FF Series

Cross flow fans are particularly indicated for uses where, in limited space, high air volume is required with low noise and regular air-flow.

The FF-FFD series provides an additional fixing option through 4 +4 extensions placed directly on the side.

The information in this catalogue is provided for illustrative purposes only and it does not imply any contractual obligation. Coprel can make changes to this information at any time without any notice.

Technical specifications:

- single phase, 2-shaded poles, impedance protected motor, built according to the “CE” mark requirements, in compliance with EN 60335-1 standard, with self-aligning and self lubricating sleeve bearings with big oil reservoir;
- motor with minimum 130 “B” insulation class;
- suitable for continuous operation in ambient temperature from -10° C to +50° C;
- electrical connection by 6,3x0,8 mm, radial or axial, male faston-type connectors, directly fixed on coil;
- constant thickness Ø 60 mm aluminium impeller with forward curved blades fitted with intermediate reinforcement discs;
- housing made of pre-galvanized metal sheet, designed to ensure high aeraulic efficiency and low noise level.

On request:

- version with IMQ - CSV approved motor;
- motor with different powers and insulation classes: 155 “F” - 180 “H”;
- supply voltage from 12V to 400V 50/60Hz;
- version with dual voltage and/or double rotation speed;
- electrical connection by means of different cable lengths;
- motor coil winding with IP55 protection;
- protection against dust and/or humidity;
- thermal protector and/or thermal fuse;
- housing with black cataphoresis coating;
- several “HT” versions for operation from -30° C to 100° C;
- built in compliance with UL-CSA standards;
- version fitted with ball bearings;
- version built to customers design.

**OUR TECHNICAL AND COMMERCIAL OFFICE
CAN ADVISE YOU ON THE VERSION THAT MOST SUITS
YOUR APPLICATION NEEDS**

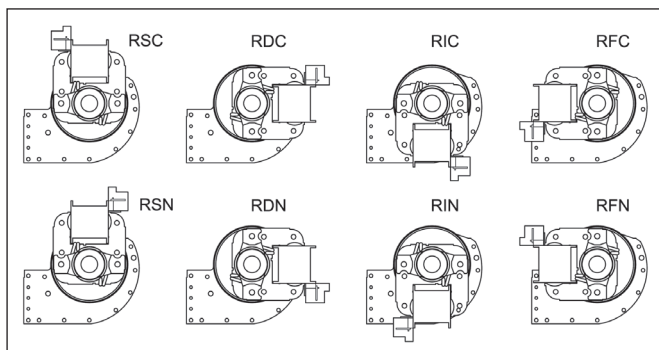
Product Identification Code

TF	R	240	20	T	1	A	SN	HT	BB	VR	230	50
1	2	3	4	5	6	7	8	9	10	11	12	13

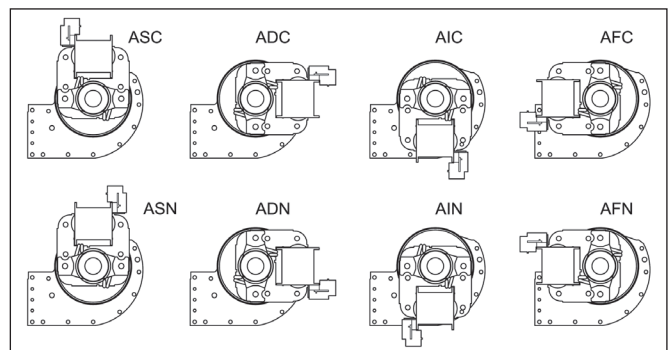
- 1) **TF** series: “standard” housing
FF series: housing with “ears”
see FF series dimensions
- 2) motor position
R: motor on the right of the air outlet
L: motor on the left of the air outlet
- 3) fan blade nominal length
90 - 120 - 180 - 240 - 270 - 300 - 360 - 420 - 480 mm
- 4) motor stack height
15-20-30-35-40 mm
- 5) thermal protection
T: thermal protector
F: thermal fuse
blank: impedance protected
- 6) coil winding code
- 7) electrical connection
R: radial faston-type connectors
A: axial faston-type connectors
C: cables
- 8) motor position
see table 1 and 2 below
- 9) on request (*)
HT: high-temperature version
IV-IM-PRN: low temperature with high relative humidity up to 92%
INC: coil insulation with IP55 protection
- 10) on request
BB: ball bearings on motor
BBLV: ball bearings on motor and impeller
- 11) on request, fitted with cooling fan on motor side
- 12) supply voltage
- 13) rated frequency

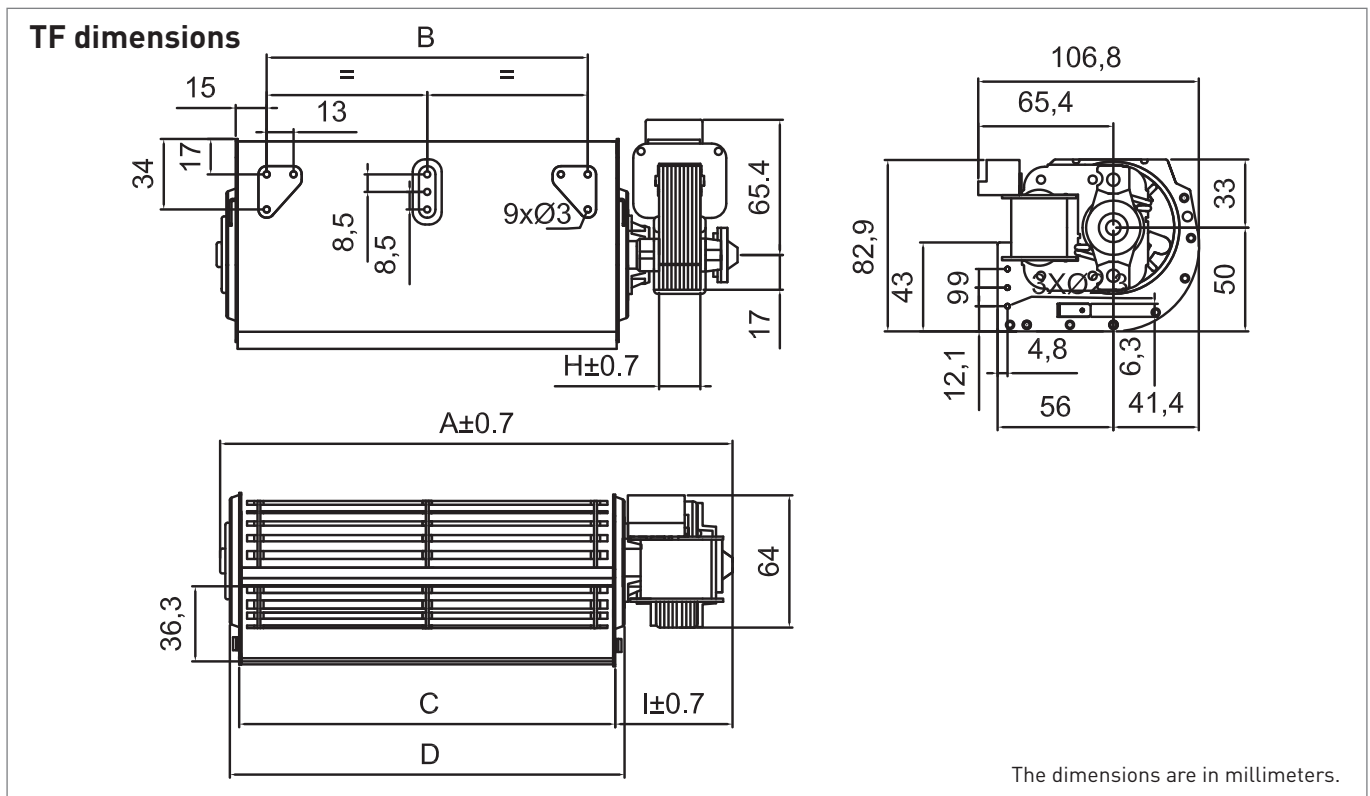
(*) Impregnated versions:
IV version: impregnated coil through dip-coating using epoxy transparent paint. (standard stator coil dip-coating process).
PRN version: coil coated with black epoxy resin, the coil is protected by a clearly visible layer of resin.
IM version: impregnated coil through dip-coating using transparent epoxy paint with silicone applied on contacts at the end of winding, three-pole wire and coil covered by a nylon cap. The coil is not buried in the resin but visible; caution should be paid when mounting the motor so that the cap open part faces downward to prevent its filling up with condensate.
INC version: coil with IP55 protection, the coil is completely buried into the epoxy resin.

Motor position -radial faston-type connectors (table 1)



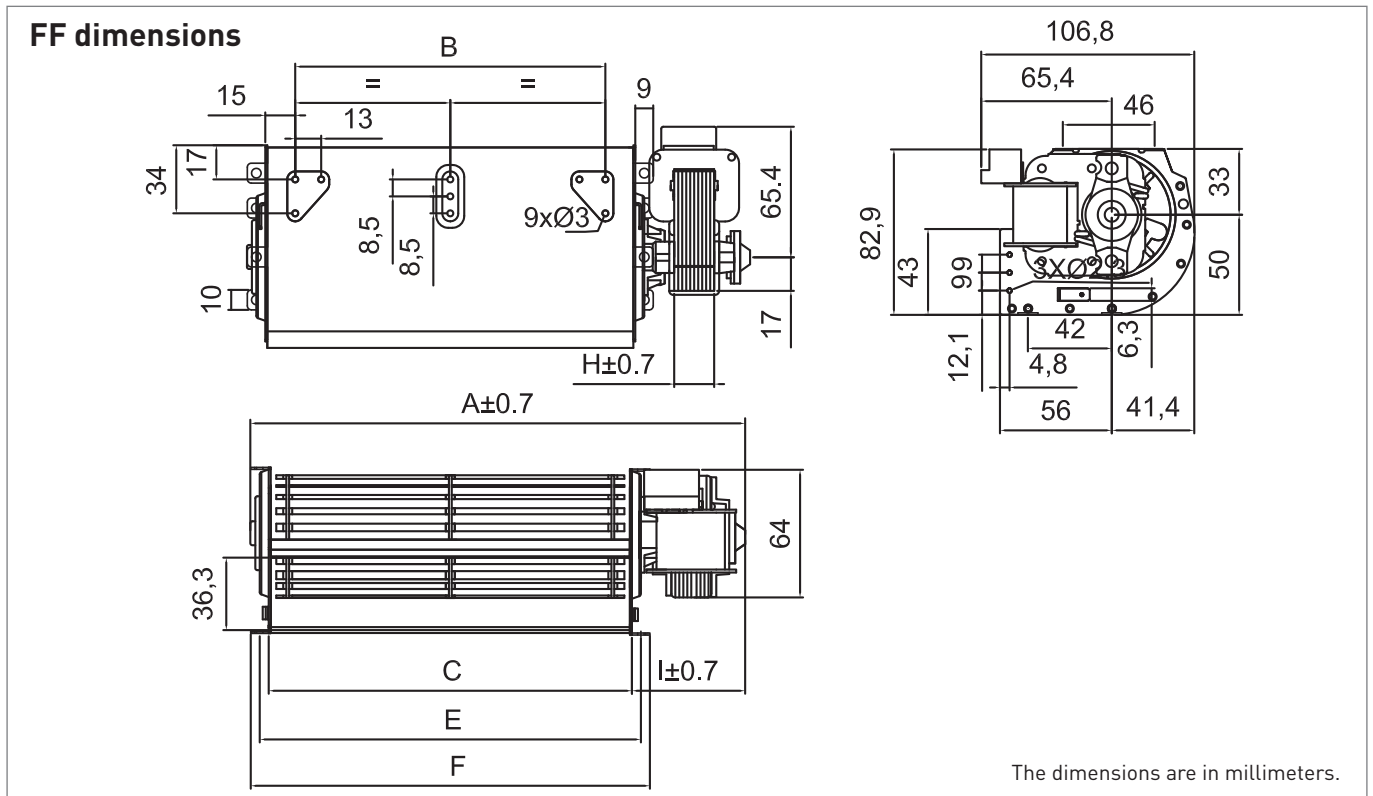
Motor position -axial faston-type connectors (table 2)





TF versions

Series	Motor	Dimensions						Input Power (W)	Input Current (A)	RPM	Flow rate (m³/h)	Static pressure (ΔPa)	Curve n°
		A	B	C	D	H	I						
TF 90/15	15-1	156	64	94	104	15	53,5	16	0,13	2250	80	53	1
TF 90/20	20-1	162	64	94	104	20	58,5	20	0,15	2550	92	59	2
TF 120/15	15-1	186	94	124	134	15	53,5	18	0,14	1800	101	49	3
TF 120/20	20-1	191	94	124	134	20	58,5	22	0,16	2250	127	60	4
TF 180/15	15-1	246	154	184	194	15	53,5	19	0,15	1250	107	48	5
TF 180/20	20-1	251	154	184	194	20	58,5	23	0,17	1700	144	62	6
TF 180/30	30-1	261	154	184	194	30	68,5	35	0,25	2450	212	73	7
TF 180/35	35-1	266	154	184	194	35	73,5	41	0,31	2550	234	75	8
TF 240/20	20-1	311	214	244	254	20	58,5	24	0,18	1200	149	55	9
TF 240/30	30-1	321	214	244	254	30	68,5	37	0,27	2200	262	78	10
TF 240/35	35-1	326	214	244	254	35	73,5	45	0,33	2350	283	80	11
TF 270/20	20-1	341	244	274	284	20	58,5	24	0,18	1150	163	42	12
TF 270/30	30-1	351	244	274	284	30	68,5	39	0,28	1950	280	78	13
TF 270/35	35-1	356	244	274	284	35	73,5	46	0,34	2150	313	80	14
TF 300/20	20-1	371	274	304	314	20	58,5	24	0,18	1150	171	45	15
TF 300/30	30-1	381	274	304	314	30	68,5	40	0,29	1750	268	77	16
TF 300/40	40-1	391	274	304	314	40	78,5	48	0,37	2400	348	80	17
TF 360/20	20-1	431	334	364	374	20	58,5	24	0,18	950	183	40	18
TF 360/30	30-1	441	334	364	374	30	68,5	40	0,3	1350	262	78	19
TF 360/40	40-1	451	334	364	374	40	78,5	53	0,4	1900	325	78	20
TF 420/30	30-1	501	394	424	434	30	68,5	41	0,31	1200	271	70	21
TF 420/40	40-1	511	394	424	434	40	78,5	54	0,42	1600	359	76	22
TF 480/30	30-1	561	454	484	494	30	68,5	40	0,3	1150	283	62	23
TF 480/40	40-1	571	454	484	494	40	78,5	54	0,42	1250	364	69	24

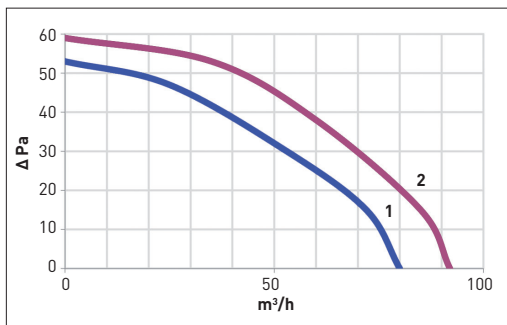


FF versions

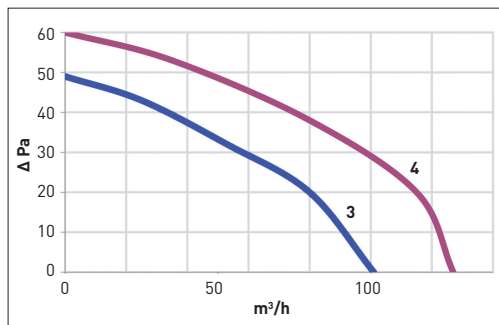
Series	Motor	Dimensions							Input Power (W)	Input Current (A)	RPM	Flow rate (m³/h)	Static pressure (ΔPa)	Curve n°
		A	B	C	E	F	H	I						
FF 90/15	15-1	156	64	94	103	112	15	53,5	16	0,13	2250	80	53	1
FF 90/20	20-1	162	64	94	103	112	20	58,5	20	0,15	2550	92	59	2
FF 120/15	15-1	186	94	124	133	142	15	53,5	18	0,14	1800	101	49	3
FF 120/20	20-1	191	94	124	133	142	20	58,5	22	0,16	2250	127	60	4
FF 180/15	15-1	246	154	184	193	202	15	53,5	19	0,15	1250	107	48	5
FF 180/20	20-1	251	154	184	193	202	20	58,5	23	0,17	1700	144	62	6
FF 180/30	30-1	261	154	184	193	202	30	68,5	35	0,25	2450	212	73	7
FF 180/35	35-1	266	154	184	193	202	35	73,5	41	0,31	2550	234	75	8
FF 240/20	20-1	311	214	244	253	262	20	58,5	24	0,18	1200	149	55	9
FF 240/30	30-1	321	214	244	253	262	30	68,5	37	0,27	2200	262	78	10
FF 240/35	35-1	326	214	244	253	262	35	73,5	45	0,33	2350	283	80	11
FF 270/20	20-1	341	244	274	283	292	20	58,5	24	0,18	1150	163	42	12
FF 270/30	30-1	351	244	274	283	292	30	68,5	39	0,28	1950	280	78	13
FF 270/35	35-1	356	244	274	283	292	35	73,5	46	0,34	2150	313	80	14
FF 300/20	20-1	371	274	304	313	322	20	58,5	24	0,18	1150	171	45	15
FF 300/30	30-1	381	274	304	313	322	30	68,5	40	0,29	1750	268	77	16
FF 300/40	40-1	391	274	304	313	322	40	78,5	48	0,37	2400	348	80	17
FF 360/20	20-1	431	334	364	373	382	20	58,5	24	0,18	950	183	40	18
FF 360/30	30-1	441	334	364	373	382	30	68,5	40	0,3	1350	262	78	19
FF 360/40	40-1	451	334	364	373	382	40	78,5	53	0,4	1900	325	78	20
FF 420/30	30-1	501	394	424	433	442	30	68,5	41	0,31	1200	271	70	21
FF 420/40	40-1	511	394	424	433	442	40	78,5	54	0,42	1600	359	76	22
FF 480/30	30-1	561	454	484	493	502	30	68,5	40	0,3	1150	283	62	23
FF 480/40	40-1	571	454	484	493	502	40	78,5	54	0,42	1250	364	69	24

Typical curves

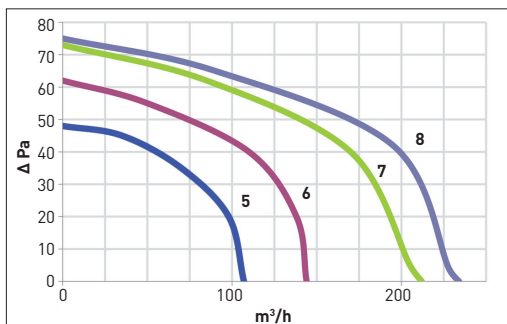
TF/FF 90



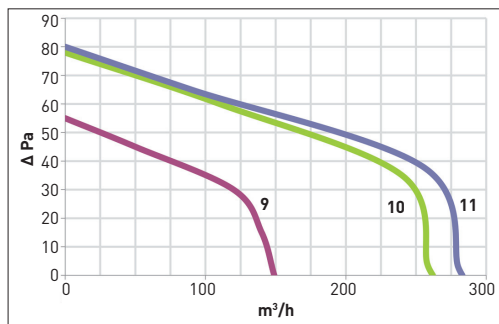
TF/FF 120



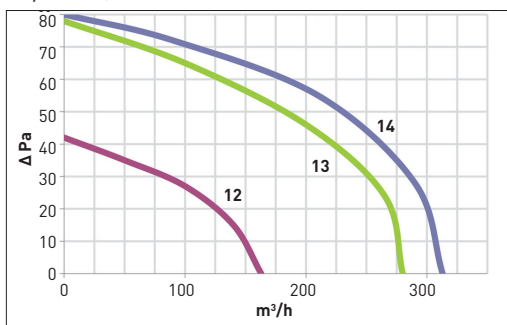
TF/FF 180



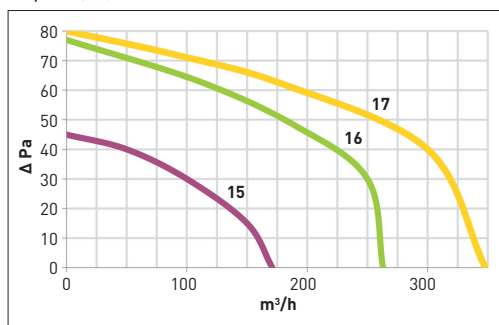
TF/FF 240



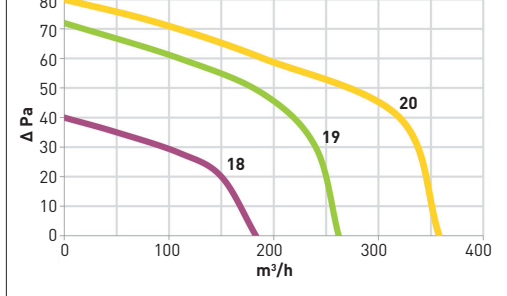
TF/FF 270



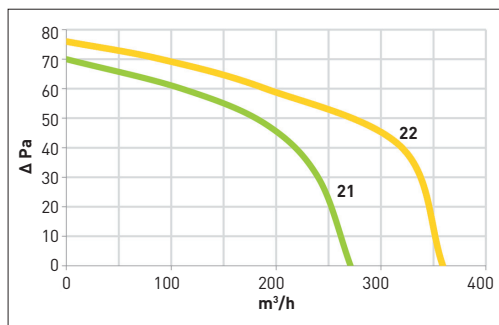
TF/FF 300



TF/FF 420



TF/FF 480



TF/FF 480

